



PLATU 25  
WORLD CHAMPIONSHIP  
22-28 August 2021

## SAILING INSTRUCTIONS (SIs)



**2021 Platu 25 Open World Championship**  
in Nida, Lithuania from 22 to 28 August of 2021



The notation 'INP' in a rule of the sailing instructions (SIs) means that a boat may not protest another boat for breaking that rule. This changes RRS 60.1(a).

## 1 RULES

- 1.1 The event is governed by the rules as defined in The Racing Rules of Sailing.
- 1.2 The International Platu 25 Class Association (IPCA) Rules & Regulations will apply.
- 1.3 RRS 44.1 is changed so that the Two-Turns Penalty is replaced by the One-Turn Penalty.
- 1.4 For Medal Races, World Sailing Addendum Q or Appendix UF, Umpired Fleet Racing, will apply and takes precedence over any conflicting instructions.

## 2 CHANGES TO SAILING INSTRUCTIONS

- 2.1 Any change to the sailing instructions will be posted before 09:00 on the day it will take effect, except that any change to the schedule of races will be posted by 20:00 on the day before it will take effect.

## 3 COMMUNICATIONS WITH COMPETITORS

- 3.1 Notices to competitors will be posted on the official online notice board located at <https://lt.regattas.eu/platuworlds2021>.
- 3.2 The race office is located at a temporary container next to Marina of Nida Naglių g. 14, Nida.
- 3.3 On the water, the race committee intends to monitor and communicate with competitors on VHF radio channel 68.
- 3.4 The Race Committee may give verbal confirmation of any race signal over VHF. Failure to make a broadcast or to time it accurately will not be grounds for request for redress by the boat. This changes RRS 60.1(b).
- 3.5 [DP] From the first warning signal until the end of the last race of the day, except in an emergency, a boat shall not make voice or data transmissions and shall not receive voice or data communication that is not available to all boats.

## 4 CODE OF CONDUCT

- 4.1 [DP] Competitors and support persons shall comply with reasonable requests from race officials.
- 4.2 [DP] Competitors and support persons shall handle any equipment or place advertising provided by the organizing authority with care, seamanship, in accordance with any instructions for its use and without interfering with its functionality.

## 5 SIGNALS MADE ASHORE

- 5.1 Signals made ashore will be displayed at Nida marina flagpole.
- 5.2 When flag AP is displayed ashore, '1 minute' is replaced with 'not less than 30 minutes' in Race Signals AP.

## 6 SCHEDULE OF RACES

### 6.1 Dates of racing:

<b>August 23rd</b>	<b>13:00</b>	<b>Practice rase</b>
<b>August 24th</b>	<b>12:00</b>	<b>First Warning signal</b>
<b>August 25th</b>	<b>12:00</b>	<b>First Warning signal</b>
<b>August 26th</b>	<b>12:00</b>	<b>First Warning signal</b>
<b>August 27th</b>	<b>12:00</b>	<b>First Warning signal</b>
<b>August 28th</b>	<b>11:00</b>	<b>First Warning signal for one Opening series race</b>
	<b>14:00</b>	<b>Warning signal for Medal Race</b>

6.2 Three races are scheduled every racing day, except the last day of the Regatta.

6.3 One extra race per day may be sailed, except the last day of the Regatta.

6.4 To alert boats that a race or sequence of races will begin soon, the orange starting line flag will be displayed with one sound at least five minutes before a warning signal is made.

6.5 On the last scheduled day of racing no warning signal will be made after 16:00.

## 7 CLASS FLAG

7.1 Class flag will be Platu 25 Class insignia on white background.

## 8 RACING AREA

8.1 Attachment A shows the location of racing areas.

## 9 COURSES

9.1 The diagrams in Attachment B show the courses, including the approximate angles between legs, the order in which marks are to be passed or rounded, and the side on which each mark is to be left.

9.2 No later than the warning signal, the race committee signal vessel will display the approximate compass bearing of the first leg.

## 10 MARKS

10.1 Marks 1, 1a, 2s/2p are red inflatable buoys.

10.2 The following marks are rounding marks: 1, 1a, 2s/2p

10.3 New mark, as provided in SI 12, is yellow inflatable buoy.

10.4 The starting and finishing marks will be the race committee signal vessel at the starboard end and a pin-end boat or a buoy at the port end.

## 11 THE START

- 11.1 Races will be started using RRS 26.
- 11.2 The starting line is between a staff displaying an orange flag on starting marks.
- 11.3 A boat that does not start within four (4) minutes after her starting signal will be scored Did Not Start without a hearing. This changes RRS A5.1 and A5.2.

## 12 CHANGE OF THE NEXT LEG OF THE COURSE

12.1 To change the next leg of the course, the race committee will lay a new mark, or move the finishing line and remove the original mark as soon as practicable. If mark 1 is replaced by a new mark, mark 1A will not be replaced and will no longer be a mark of the course for boats after rounding the new mark. When in a subsequent change a new mark is replaced, it will be replaced by an original mark except that mark 1A will not be replaced.

## 13 THE FINISH

13.1 The finishing line is between staff displaying blue flag on the race committee signal vessel at the starboard end and a buoy at the port end.

## 14 TIME LIMITS

14.1 The Race Time Limit (see RRS 35) and the Finishing Window are shown in the table below.

	Race Time Limit	Finishing Window
Opening Series	90 minutes	20 minutes
Medal Race	30 minutes	5 minutes

14.2 The Finishing Window is the time for boats to finish after the first boat sails the course and finishes. Boats failing to finish within the Finishing Window, and not subsequently retiring, penalized or given redress, will be scored Time Limit Expired (TLE) without a hearing. A boat scored TLE shall be scored points for the finishing place one more than the points scored by the last boat that finished within the Finishing Window. This changes RRS 35, A5.1, A5.2 and A10.

## 15 HEARING REQUESTS

- 15.1 The protest time limit is 60 minutes after the last boat finishes the last race of the day or the race committee tee signals no more racing today, whichever is later. The time will be posted on the official notice board.
- 15.2 Hearing request forms are available at the race office.
- 15.3 Notices will be posted online no later than 30 minutes after the protest time limit to inform competitors of hearings in which they are parties or named as witnesses. Hearings will be held in the protest room,

located at Marina of Nida Naglių g. 14, beginning at the time posted.

## **16 RACE FORMAT**

- 16.1 The regatta consists of an Opening Series and a Medal Race.
- 16.2 At 13:00 on the last day the top ten competitors in the overall rankings of Opening Series will be assigned to sail in the Medal Race. The International Jury may extend this time limit.

## **17 SCORING**

- 17.1 Five (5) races are required to be completed to constitute a series.
- 17.2 (a) When fewer than five (5) races have been completed, a boat's series score is the total of her race scores.  
(b) When from five (5) to eight (8) races have been completed, a boat's series score is the total of her race scores excluding her worst score.  
(c) When nine (9) or more races have been completed, a boat's series score is the total of her race scores excluding her two worst scores.
- 17.3 Competitors assigned to compete in the Medal Races will be ranked highest in the regatta except for a competitor disqualified from a Medal Race under RRS 69.
- 17.4 MEDAL RACE
  - 17.4.1 The Medal Race score shall not be excluded.
  - 17.4.2 The Medal Race score double points (1st = 2 points, 2nd = 4 points, etc), and the scores are based on the number of competitors assigned to compete in that race. This changes RRS A4.
  - 17.4.3 If no Medal Race is completed, the rankings in Opening Series will be established and this shall count as the official result.
  - 17.4.4 For competitors assigned to compete in the Medal Race, ties in the regatta score are broken by the Medal Race scores. This changes RRS A8.
  - 17.4.5 A competitor assigned to compete in the Medal Race shall make a genuine effort to start, sail the course and finish. The penalty for a breach of this instruction will be ranking the competitor tenth in the regatta. If there are two such competitors, they will be ranked ninth and tenth, in order of their Series ranks, and so on. This changes RRS A4 and A5.

## **18 SAFETY REGULATIONS**

- 18.1 [DP] A boat that retires from a race shall notify the race committee at the first reasonable opportunity.

## **19 REPLACEMENT OF CREW OR EQUIPMENT**

- 19.1 [DP] Substitution of competitors is not allowed without prior written approval of the Technical Committee.
- 19.2 [DP] Substitution of damaged or lost equipment is not allowed unless authorized in writing by the Technical Committee. Requests for substitution shall be made to the committee at the first reasonable opportunity, which may be after the race.

## **20 EQUIPMENT AND MEASUREMENT CHECKS**

- 20.1 A boat or equipment may be inspected at any time for compliance with the class rules, notice of race and sailing instructions.
- 20.2 [DP] When instructed by a race official on the water, a boat shall proceed to a designated area for inspection.

## 21 [DPI] SUPPORT TEAMS

21.1 Team leaders, coaches and other support persons shall stay outside areas where boats are racing from the time of the preparatory signal for the first start until all boats have finished or retired or the race committee signals a postponement, general recall or abandonment.

## 22 TRASH DISPOSAL

22.1 Trash may be placed aboard official or support person vessels.

## 23 BERTHING

23.1 [DPI] Boats shall be kept in their assigned places while in the harbour.

## 24 HAUL-OUT RESTRICTIONS

24.1 [DPI] Boats shall not be hauled out during the event except with and according to the terms of prior written permission of the race committee.

## 25 DIVING EQUIPMENT AND PLASTIC POOLS

25.1 Underwater breathing apparatus and plastic pools or their equivalent shall not be used around keelboats between the preparatory signal of the first race and the end of the last race of the event.

## 26 PRIZES

26.1 The first crew of the final official ranking list of the Championship will be declared: "Platu 25 Class World Champion"

26.2 Trophies will be awarded to the first, second and third place crews of the Open World Championship.

26.3 A Trophy will be awarded to the winner of the Corinthian division of the World Championship.

26.4 A Trophy will be awarded to the crew of the first all-female boat in the official ranking list.

26.5 A Trophy will be awarded to the crew of the first all-U24 boat in the official ranking list.

26.6 Prizes will be awarded to the top-ten placed crews of the World Championship by the Organizing Authority.

26.7 Prizes will be awarded to the winner of each individual race by the Organizing Authority.

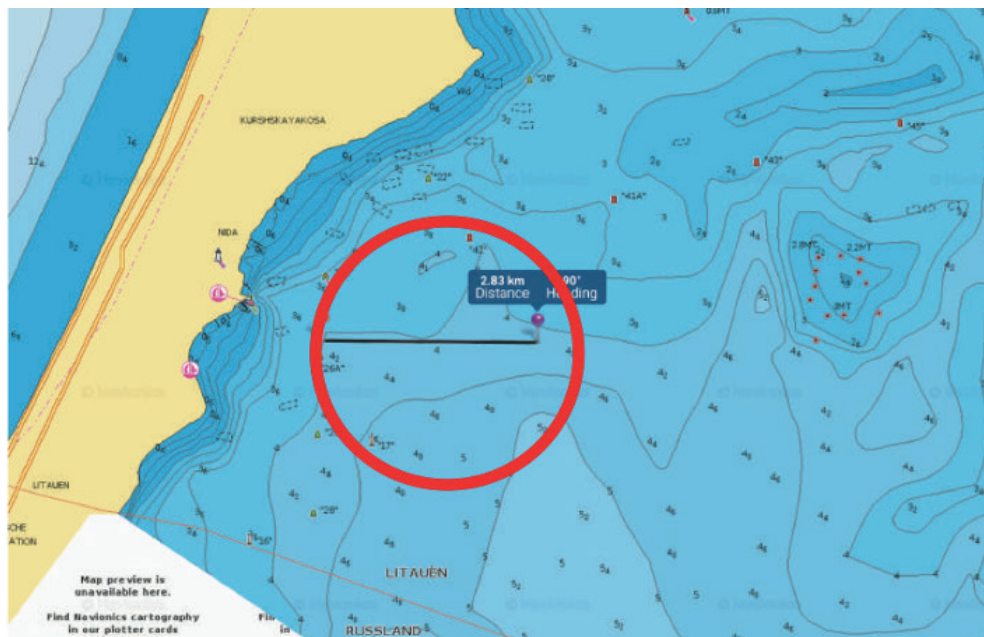
## 27 RISK STATEMENT

27.1 RRS 3 states: 'The responsibility for a boat's decision to participate in a race or to continue to race is hers alone.' By participating in this event each competitor agrees and acknowledges that sailing is a potentially dangerous activity with inherent risks. These risks include strong winds and rough seas, sudden changes in weather, failure of equipment, boat handling errors, poor seamanship by other boats, loss of balance on an unstable platform and fatigue resulting in increased risk of injury. **Inherent in the sport of sailing is the risk of permanent, catastrophic injury or death by drowning, trauma, hypothermia or other causes.**

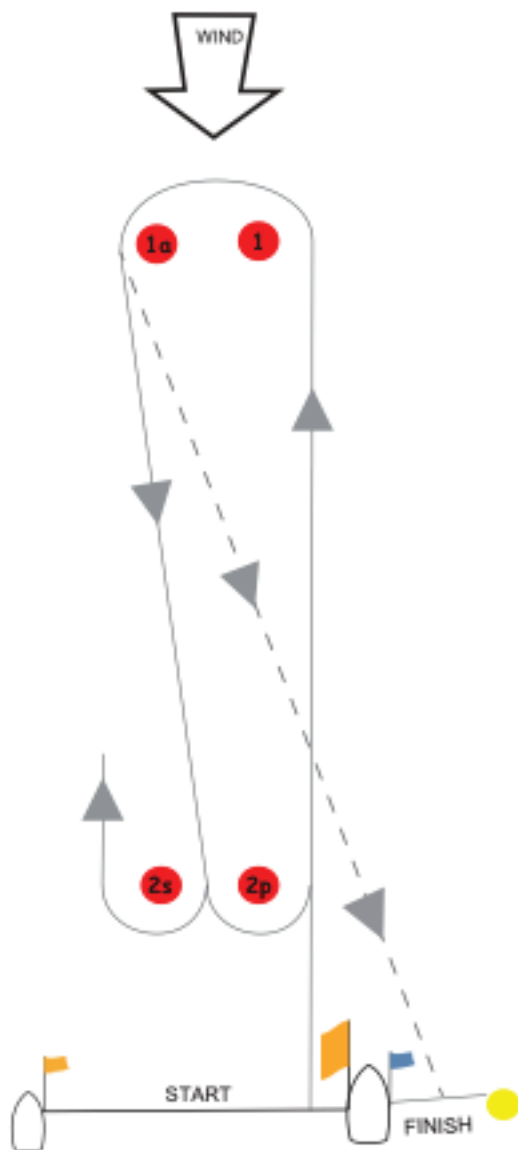
## 28 INSURANCE

28.1 Each participating boat shall be insured with valid third-party liability insurance with a minimum cover of 1 500 000 Euro per incident or the equivalent.

## ATTACHMENT A



## ATTACHMENT B



**START – 1 – 1A – 2S/2P – 1 – 1A – FINISH**