



NOTICE OF RACE

PLATU 25 CLASS
WORLD CHAMPIONSHIP
22-28 August 2021

Gero Vėjo Klubas (GVK) acting as Lithuanian Platu 25 Class Association (LPCA) in co-operation with the International Platu 25 Class Association (IPCA) and under the auspices of the Lithuanian Yachting Union (LYU) are pleased to invite Platu 25 sailors to take part in the:



2021 Platu 25 Open World Championship
in Nida, Lithuania from 22 to 28 August of 2021



1. RULES

- 1.1 The Championship will be governed by the rules as defined in Racing Rules of Sailing (RRS).
- 1.2 National Authority prescriptions will not apply, except for resolutions, decisions and recommendations of the Government of the Republic of Lithuania and the Ministry of Health related to the prevention of the spread of COVID-19 infectious disease (coronavirus pandemic).
- 1.3 No Class Rule variations will apply.
- 1.4 For the Medal Race, World Sailing Addendum Q, Umpired Fleet Racing, currently available on the World Sailing website shall apply. The version that is current when the regatta begins will be listed in the Sailing Instructions.
- 1.5 In all rules governing this Championship:
 - 1.5.1 INPI denotes a rule that shall not be grounds for protests by a boat. This changes RRS 60.1(a).
 - 1.5.2 ISPI denotes a rule which a standard penalty may be applied by the Race Committee without a hearing, or a discretionary penalty applied by the International Jury with a hearing. This changes RRS 63.1 and A5.1.
- 1.6 If there is a conflict between languages the English text will take precedence.

2. [DP] [SP] [NP] ADVERTISING AND BOW NUMBERS

- 2.1 [DP] Boats may be required to display bow numbers and / or advertising chosen and supplied by the Organizing Authority. If this rule is broken, World Sailing Regulation 20.9.2 applies.

3. ELIGIBILITY AND ENTRY

- 3.1 The regatta is open to boats of the Platu 25 Class and to competitors who comply with World Sailing Regulation 19 – Eligibility Code. Only crews representing nations in good standing with the International Platu 25 Class Association may participate. At least one crew member shall be a member of a National Platu 25 Class Association affiliated to the National Authority or of the IPCA when there is no National Association in the concerned country.
- 3.2 Eligible boats shall fill in the relevant "On-line Entry Form" on the Championship website at www.platuworlds2021.com and pay the corresponding entry fees. The Organizing Authority will publish the list of pre-entries on Championship website. Only crews with valid pre-entry in the list may take part in the Championship. The request for entry shall be filled in and the entry fees shall be paid to the Organizing Authority and received on or before 15 of July 2021 as well as on or before 10 of August 2021 to benefit from the advantage of the reduced entry fees (refer to 5.1).
- 3.3 Entries sent after the deadline indicated above, but on or before 22 of August 2021, will be accepted with the required entry fees. Late entries received on 23 of August 2021 or later will be accepted only at the discretion of the IPCA, whose decision shall be final.
- 3.4 Competitors under 18 years of age shall present a signed and completed parent (or guardian) consent and declaration form at on-site registration.
- 3.5 Support persons are requested to fill in the entry form posted at www.platuworlds2021.com on or before 23 of August 2021. Entry fees shall be paid direct to the Organizing Authority during on-site registration (refer to 5.1).

4. CLASSIFICATION

- 4.1 The World Sailing Sailor Classification Code will apply to teams in the Corinthian Trophy (see RRS79). Please refer to World Sailing Web site: www.sailing.org
- 4.2 Each athlete must indicate his(her) classification and the unique World Sailing sailor ID on the entry form if entering for the Corinthian Trophy.
- 4.3 The closing date for the registration of Corinthian entries shall be 23 of August 2021.
- 4.4 Sailors shall be registered with World Sailing prior 23 of August 2021 and be able to declare their World Sailing sailor ID and group number on the entry form.
- 4.5 Classification will be checked at registration. A final list will be published at the closing time of registration.
- 4.6 The Classification Protest Time Limit is the end of the protest time limit on the first day of racing

(24 of August 2021) for the championship.

- 4.7 Should a boat whose Corinthian entry has been checked and accepted need to change a crew member between the closing date of entries and the start of the regatta, the name of the new crew member with their valid World Sailing sailor ID and group number shall be submitted to the OA for approval by the Championship Classification committee comprised by the Jury Chairman, the Class Representative and a member of the OA.

5. FEES

- 5.1 The entry fee is EUR 650 per boat.
 The entry fee is reduced to EUR 550 per boat for boats that have completed online entry and paid their entry fee on or before 15 of July 2021.
 The entry fee is reduced to EUR 600 per boat for boats that have completed online entry and paid their entry fee on or before 10 of August 2021.
 Entry fees to be paid by Support Persons are EUR 75 per person and will be paid directly to the Organizing Authority at on-site registration.
 These entry fees include all collective services provided by the Organizing Authority, such as social events, boat park facilities, toilets and showers.
- 5.2 Entry fees shall be paid at the same time the entry form is submitted via bank transfer to:
Account holder: Asociacija GERO VEJO KLUBAS
Address of account holder: Gaono str. 10, Vilnius 01131, Lithuania
IBAN: LT114010042403448336
Swift: AGBLLT2X, **Bank:** Luminor Bankas, AB
 Please advise when bank transfer has been made by **email to:** info@gerovejoklubas.lt

6. CHAMPIONSHIP FORMAT

- 6.1 The Championship will be competed in one fleet with up to 15 fleet races in the opening series and a Medal Race, provided a minimum of 5 races have been completed in the opening series. The top ten finishers in the opening series shall advance to the Medal Race.
- 6.2 Medal Race - will be scheduled as per NoR 7.1.

7. SCHEDULE

Day 1	22 of August 2021	Registration and measurement	10:00 – 19:00
Day 2	23 of August 2021	Registration and measurement Practice Races	10:00 – 19:00 13:00
Day 3	24 of August 2021	Opening Ceremony Races	10:00 12:00
Day 4	25 of August 2021	Races	10:00
Day 5	26 of August 2021	Races Regatta dinner	10:00 20:00
Day 6	27 of August 2021	Races	10:00
Day 7	28 of August 2021	Races Medal Race Prize Giving / Closing Ceremony	10:00 14:00 A.S.A.P

- 7.2 No warning signal will be given after 16:00 on the last racing day.
7.3 No more than four races shall be sailed each day.

8. [DPI] [NP] MEASUREMENT

- 8.1 A Technical Committee shall be appointed in accordance with RRS g2.
8.2 Each boat shall produce a valid Measurement Certificate, including the completed Measurement Form, at the time of pre-race equipment inspections. If a boat is to produce a measurement certificate in accordance with RRS 78.2, she shall do so before 9:00 on 24 of August 2021.
8.3 Pre-race equipment inspections will consist of, at least:
 - full measurement of boats, chosen at random, with emphasis on boats within the Top 10 of the final results of the 2018 World Championship,
 - for the other boats, measurement shall include at least: conformity of the hull to the measurement certificate, identification marks on hull, spars and sails, permitted fittings on boats and safety equipment.The Event Chief Measurer may request additional inspections checks on a case by case basis.
8.4 Event Measurement Regulations and Policies will be published on the Championship website before the start of the event and posted on the official notice board the day before the first day for event measurement. They will be available to competitors, team leaders and coaches at the Race Office upon request.
8.5 In accordance with RRS78, competitors are responsible for maintaining their boat in accordance with the Class Rules (for the purpose of RRS 78, competitors are considered to be the owners). Equipment checks will be performed at random during the regatta.

9. SAILING INSTRUCTIONS

- 9.1 Sailing Instructions will be available during registration at the Race Office and at the Championship website. Other documents governing the event will be published with the Sailing Instructions.

10. VENUE

- 10.1 The regatta site is located at:
Nida Marina (Nagliu str. 14, 93123 Neringa, Lithuania)
Telephone: +370-698-76978
Email: info@gerovejoklubas.lt
Contact Person: Paulius Petrašiūnas
- 10.2 Appendix 1 shows the location of the racing area (N 55° 18' E 21° 01').

11. COURSES

- 11.1 The courses will be Windward/Leeward.

12. INTERNATIONAL JURY

- 12.1 An International Jury shall be appointed in accordance with RRS g1(b).
12.2 Decisions of the International Jury shall be final as provided in RRS 70.5.

13. SCORING

13.1 RRS Appendix A will apply.

13.2 There will be up to 15 fleet races in the series. At least 5 fleet races are required to be completed to constitute the Championship or to enter the Medal Race.

13.3 Discards

- When fewer than 5 races have been completed, a boat's series score is the total of her race scores from all races,
- When 5 to 8 races have been completed, a boat's series score is the total of her race scores excluding her worst score.
- When 9 to 15 races have been completed, a boat's series score is the total of her race scores excluding her two worst scores.

13.4 Medal Race

- The boats assigned to compete in the Medal Race will be ranked highest in the Championship except for a boat disqualified from the Medal Race under RRS 5, 6 or 69.
- A boat's score shall be double the number of points specified in RRS Appendix A4, and the score of that race shall not be excluded from the series score.
- Ties in the series score between boats with different Medal Race point scores shall be broken in favour of the boat that scored better in the Medal Race. This changes RRS Appendix A8.

14. [DP] [NP] SUPPORT PERSONS

14.1 All Support Persons shall be registered (see 3.5) with the Organizing Authority and will be required to comply with local legislation and event Support Persons Regulations. The Organizing Authority may refuse registrations and accept later registrations at their sole discretion.

14.2 Registered Support Persons boats shall fly a flag with their three-letter national code (see RRS G1.1) clearly displayed or shall carry a sticker of their three-letter national code on each side of the boat or engine. The minimum height for the letters shall be 200 mm. The flag or stickers will not be provided by the Organizing Authority.

14.3 Registered Support Persons boats shall act as assistance / rescue boats in case of need and shall comply with any instructions given by the Race Committee or the Organizing Authority.

14.4 All Support Persons boats shall have third party liability insurance with a minimum cover of EUR 1,500,000 or equivalent per incident.

15. [DP] [NP] BERTHING & HAULING OUT

15.1 When berthed, boats shall be kept in their assigned place at the venue harbour.

15.2 All boats shall be afloat before 19:00 on 23 of August 2021.

15.3 Boats shall not be hauled out during the regatta except in case of damage, with and according to the terms of prior written permission of the technical committee.

16. PRIZES AND TITLES

16.1 The first crew of the final official ranking list of the Championship will be declared:
"Platu 25 Class World Champion"

16.2 Trophies will be awarded to the first, second and third place crews of the Open World Championship by the IPCA.

16.3 A Trophy will be awarded to the winner of the Corinthian division of the World Championship by the IPCA.

16.4 A Trophy will be awarded to the crew of the first all-female boat in the official ranking list by the IPCA.

- 16.5 A Trophy will be awarded to the crew of the first all-U24 boat in the official ranking list by the IPCA.
- 16.6 Prizes will be awarded to the top-ten placed crews of the World Championship by the Organizing Authority.
- 16.7 Prizes will be awarded to the winner of each individual race by the Organizing Authority.

17. RISK STATEMENT

- 17.1 Competitors and support team members participate in the Championship entirely at their own risk and they are reminded of the provisions of RRS 3, Decision to Race. Sailing is by its nature an unpredictable sport and therefore involves an element of risk. By taking part in the event, each competitor agrees and acknowledges that:
 - 17.1.1 They are aware of the inherent element of risk involved in the sport and accept responsibility for the exposure of themselves, their crew and their boat to such inherent risk whilst taking part in the event;
 - 17.1.2 They are responsible for the safety of themselves, their crew, their boat and their other property whether afloat or ashore;
 - 17.1.3 They accept responsibility for any injury, damage or loss to the extent caused by their own actions or omissions;
 - 17.1.4 By participating in any race, they are satisfied that their boat is in good order, equipped to sail in the event and they are fit to participate;
 - 17.1.5 The provision of a race management team, safety boats, judges and other officials and volunteers by the organizer does not relieve them of their own responsibilities;
 - 17.1.6 The provision of safety boat cover is limited to such assistance, particularly in extreme weather conditions, as can be practically provided in the circumstances.
 - 17.1.7 They will familiarize themselves with any venue/event specific risks, adhere to rules and information produced for the venue/event and they will attend any venue/event safety briefings.
- 17.2 The Organizing Authority and all parties involved in the regatta organization will not accept any liability for material damage or personal injury or death sustained in conjunction with or prior to, during, or after the regatta.

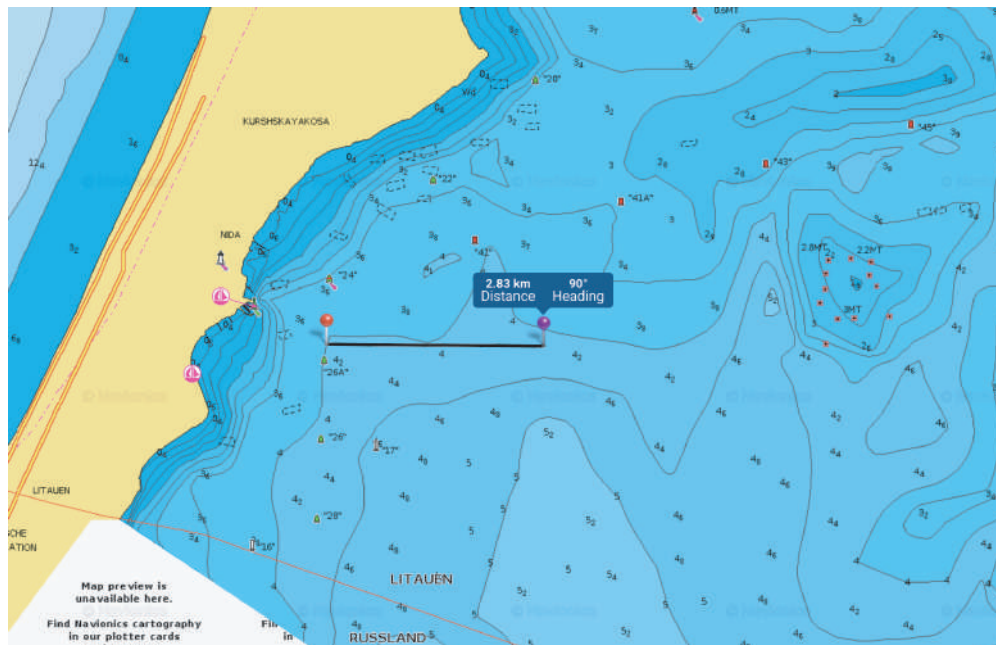
18. [IDP] [INP] MEDIA RIGHTS, CAMERAS AND ELECTRONIC EQUIPMENT

- 18.1 By participating in the Championship, competitors automatically grant to the IPCA and to the Organizing Authority and their sponsors, the right in perpetuity to make, use and show, from time to time at their discretion, any motion pictures and live, taped or filmed television and other reproductions of the athlete during the period of the competition without compensation.
- 18.2 Boats may be required to carry cameras, sound equipment or positioning equipment as specified by the organizing authority.

19. INSURANCE

- 19.1 Each participating boat shall be insured with valid third-party liability insurance with a minimum cover of EUR 1,500,000 per event or equivalent. The Organizing Authority will not be responsible for verifying the status or validity of such certificates.
- 19.2 If guidance is necessary regarding purchase of a valid third-party insurance please contact Organizing Authority well in advance by e-mail: info@gerovejoklubas.lt

APPENDIX 1 – RACING AREA



Racing area will be in the Curonian lagoon. Race course will be placed just outside the marina and visible for the spectators and audience in Nida resort (N 55° 18' E 21° 01').

END OF NOTICE OF RACE



GENERAL INFORMATION:

Accommodation in Nida:

NERIJA HOTEL

Special rate applicable for regatta participants in center of Nida and nearby to Marina.

Tel.: +370 682 38948

<https://www.neringahotels.lt/hotel-nerija/>

Nida has a wide variety of hotels, summer-houses and apartments for rent also the Nida camping site. Hotel room price starts from 40 Eur/day. It is recommended to book accommodation well in advance to secure comfortable location and reasonable price. Some of accommodation options:

<https://visitnida.com/en>

<http://kempingas.lt/en/>

How to get To Nida:

All detailed information on your journey to Nida by car, plane, train, etc. are available on-line:

<https://visitneringa.com/en/uncategorized-lt/how-to/>

Nearest Airports:

- Vilnius Intl. airport VNO. Direct bus connection to Nida from Vilnius central station. (4 hours by car)
- Palanga Intl. airport PLQ (1.5 hours by car)
- Kaunas Intl. airport KUN (3 hours by car)
- Riga Intl. airport RIX, Latvia (5 hours by car)

All the above airports are serviced by low cost and traditional airlines.

Transportation from the airports to Nida is serviced by public bus companies. Car rental services are available.

When coming by car expect a short ferry passage in Klaipėda at Smiltynės perkėla (<https://www.keltas.lt/en/>) and a minor ecology toll when entering the Curonian spit (Neringa national park).

Dominant weather conditions:

Prevailing wind: 8-15 knots, westerly.

Daytime air temperature 20-30C, mostly sunny.

Water temperature above 18C.

The venue is sheltered from all extreme weather conditions and sailing can happen in almost any conditions.

Weather forecast websites:

Windy: <https://www.windy.com/55.302/21.014?55.297,21.034,14>

Wind guru: <https://www.windguru.cz/64979>

Meteo.lt (selection - Nida): <http://www.meteo.lt/en/miestas?placeCode=Nida>